

# Let's walk!

Use this map and the key to help you find your way around. Remember, you can pause the audio walk at any point to take a closer look at your surroundings, complete one of the activities overleaf or to stop for a rest.

This walk will take about 40 minutes plus stops and covers 2.9km (1.8 mi). This walk is suitable for pushchairs and wheelchairs.

Remember to check the opening times and admission prices of any venues before starting your walk. A list of them can be found on the final page.



## Key

- Point of Interest
- Rest points
- Restrooms



Look out for Bex! As well as your audio guide, she's also here to point out additional things and give you fun challenges to complete as you walk.



## Venues on and around the walk

Remember to always check the opening times and admission prices of venues before starting your journey.

Tower of London	<a href="http://hrp.org.uk">hrp.org.uk</a>
St. Olave's Church	<a href="http://saintolave.com">saintolave.com</a>
Leadenhall Market	<a href="http://leadenhallmarket.co.uk">leadenhallmarket.co.uk</a>
The Globe Theatre	<a href="http://shakespearesglobe.com">shakespearesglobe.com</a>

^ Fold me along the lines and read me like a book!

Fun Kids Family Walks: The City of London

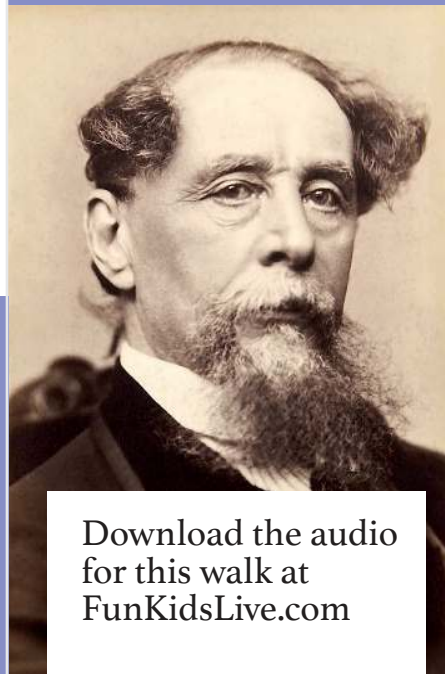
# Storytelling

From Shakespeare to Dickens, the City of London has been the backdrop for stories and storytellers alike. In this walk, we explore some of the most famous locations from The Globe Theatre to Dickens' old hangouts.

## Thanks for walking with us!

Created by Inspiring Audio for Fun Kids, the UK's children's radio station.

Listen on DAB Digital Radio, on the free Fun Kids mobile app, online at [FunKidsLive.com](http://FunKidsLive.com) or on smart speaker – just say "play Fun Kids"



Download the audio for this walk at [FunKidsLive.com](http://FunKidsLive.com)

All of these places in the City of London are mentioned in Charles Dickens' novels – can you find them in the wordsearch?

The plays in Shakespeare's time would have been at The Globe in summer and at Blackfriars in winter (because it's indoors!) – hence why it's called Playhouse Yard! This is the site of where the Blackfriars Theatre stood.

- Cheapside
- Newgate Prison
- Tower of London
- Old Bailey
- London Bridge
- Holborn
- Bank of England
- St Paul's Cathedral
- Doctors Commons
- Leadenhall Market
- Guildhall

N	H	E	D	I	S	P	A	E	H	C	N	C	D
A	R	I	A	P	K	O	M	L	L	I	O	B	O
L	I	O	L	A	Y	O	P	D	S	U	S	A	C
L	O	I	B	T	D	I	S	M	C	L	I	N	T
E	O	N	L	L	R	G	U	L	I	R	K	O	
R	O	O	D	R	O	O	A	L	R	P	O	R	
N	L	L	A	O	T	H	E	I	S	E	F	S	
N	P	W	D	R	N	D	O	B	L	B	T	E	C
N	L	G	M	B	L	B	W	E	N	E	A	N	O
I	R	E	N	I	A	G	R	L	T	R	G	M	
D	A	B	U	B	D	I	I	I	D	Y	D	W	L
G	N	G	A	A	O	G	L	I	D	O	E	A	N
A	S	G	D	H	L	H	E	E	O	G	N	N	S
H	L	L	A	D	G	S	O	I	G	Y	B	E	S

End  
Playhouse  
Yard

Faraday  
House

If you look over the river, you'll spot the Globe Theatre! It's a replica of the original Tudor playhouse that was home to Shakespeare's plays, one of England's best storytellers!

St Paul's  
Walk

True or False?

- The authentic replica you can see was made from wood and has London's only thatched roof!
- Unlike in Tudor times, the Globe launched with microphones and speakers in use.
- In Tudor times all of the actors were male. Female roles were played by boys.
- When the flag on top a theatre was flying, it meant that there was going to be a performance on that day. A black flag meant the play would be a tragedy, red flag meant a history.
- A trumpet blast let people know that the show was about to end.
- Rich and poor people went to the theatres. The rich bought seats in the gallery, whereas the poor stood by the stage.



As well as being a film location for Harry Potter and other movies, Leadenhall Market has a long and rich history. Did you know...

- It was the first place in London that allowed women to work
- It was the first place in London you could buy cutlery
- The 2012 London Olympic marathon routed through the market
- In 1766, a game of cricket took place between the poulterers and the butchers from the market for 'a considerable sum of money and a fine whole lamb for supper'. The poulterers won!

Mansion  
House

Mansion House is where the Lord Mayor of London lives. Have you seen the pantomime Dick Whittington? He's probably the most famous London Mayor! (...Oh no he isn't!)

Leadenhall  
Market

St Olave's Church

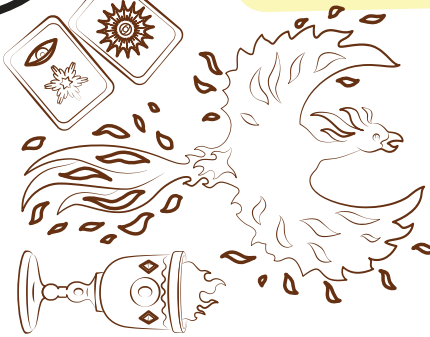


Samuel Pepys is buried in St Olave's Church Yard. He's famous for his diary but he had a very busy life, from revolutionising the way the Royal Navy was run to being an MP, and fell in and out of favour with the King and government - he was imprisoned TWICE! One of those times in the Tower of London...

Start  
Tower Hill

There are 600 years of stories from the Tower. The best way to explore them is to take a visit!

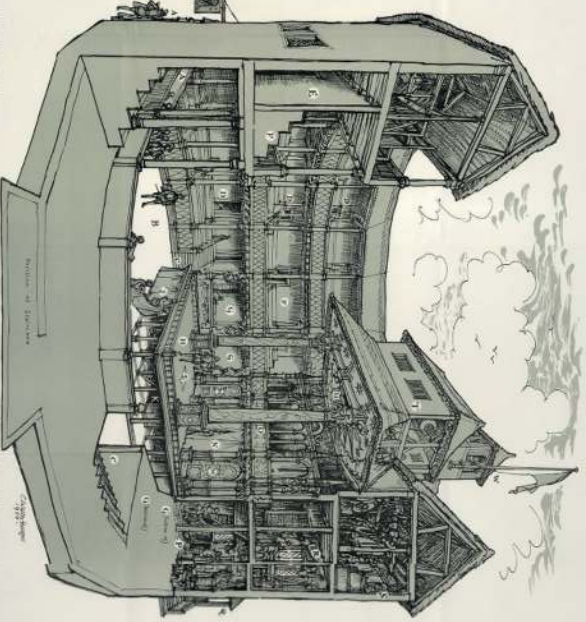
Take your time to explore Leadenhall Market. Do you recognise anything from Diagon Alley? If you can, take a look inside the Counting House Pub! It was built in 1893 as a banking hall and still maintains many of its fixtures such as the marble walls, chandelier, and even a domed ceiling.



Dickens called this church 'St Ghasty Grim' because of the skulls above the churchyard entrance...

Instead of turning right into Seething Lane, turn left and you can see a bust of Samuel Pepys in the garden on the left. This garden is really interesting - take a seat or look at the stone engravings. Every year since 1381 the owners of this garden have had to pay a fine, but it isn't money they pay, they give a red rose to the Lord Mayor. If you want to find out more, it's called Knolly's rose ceremony. Also, the new black building you can see is actually the entrance to a lift for the subterranean carpark.

There's lots to see inside the church too, including memorials to Pepys and his wife and Pepys' prayer book



(a) True, (b) False, (c) True, (d) True, (e) True, (f) True, (g) True, (h) False, (i) True, (j) True, (k) True, (l) True, (m) True, (n) True, (o) True, (p) True, (q) True, (r) True, (s) True, (t) True, (u) True, (v) True, (w) True, (x) True, (y) True, (z) True